



# **NATIONAL DIGITAL INFRASTRUCTURE PLAN JENDELA**



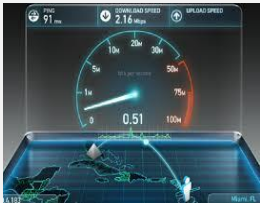

*MALAYSIAN COMMUNICATIONS AND MULTIMEDIA COMMISSION (MCMC)*

*Date: 15 February 2023*

# THE COVID-19 PANDEMIC WAS THE TRIGGER FOR MALAYSIA TO ADDRESS THE 'NEW NORM' AND CATER FOR FUTURE DEMANDS FOR DIGITAL CONNECTIVITY



Plans that were already in place to improve coverage and quality for broadband and digital services had to be accelerated

<p><b>Internet traffic increased by 30% - 70%</b></p> 	<p><b>Internet usage moved to residential areas by 50%-70%</b></p> 
<p><b>Internet speed reduced by 30%-40%</b></p> 	<p><b>Complaints on internet speed, new coverage and indoor have increased from 40%-70%</b></p> 



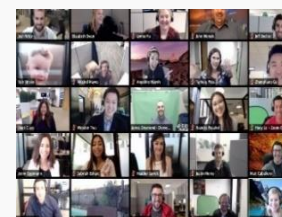
The new Malaysia to be a globally competitive, robust, resilient and an enriched digital-based society...



**EDUCATION / PRODUCTIVITY**  
Students requiring internet connectivity for home-based learning



**BUSINESSES / GOVERNMENT & SERVICE-BASED INDUSTRIES**  
Digitalised SMEs / B2B to recover and diversify their businesses



**COMMUNITIES & SOCIETIES**  
Constantly stay in-touch with families and friends

# JENDELA WAS FORMULATED TO MEET IMMEDIATE AND FUTURE NEEDS FOR DIGITAL CONNECTIVITY



## Phase 1 (2020 -2022)

## Phase 2 (2023 -2025)



**Fibre Connectivity**  
7.5 million premises passed



**4G Coverage**  
from 91.8% to 96.9% in populated areas



**Satellite Connectivity**  
Improve Internet connectivity in remote areas



**Addressing Gaps**  
Utilising Fixed Wireless Access and other fit-for-purpose technologies



**Mobile Broadband Speed**  
from 25Mbps to 35 Mbps



**3G Sunset**  
Gradual phasing out by end 2021



**5G Implementation**  
Enhanced connectivity in high economic impact areas

**Target by 2025**



**9Mil**

Premises passed

**100Mbps**

by adopting 5G

**100%**

Internet coverage in populated areas

# WHERE ARE WE TODAY IN TERMS OF ACHIEVEMENT OF TARGETS - JENDELA Phase 1 (2020 – 2022)



9 million premises  
2025  
Access to Fixed Broadband Services



Premises Passed with Fibre Connectivity

>100 Mbps  
2025  
Speed Mobile Broadband



Mobile Broadband Speed

100%  
2025  
4G Coverage in Populated Areas<sup>1</sup>



4G Coverage in populated areas

## Baseline (August 2020)

4.957 million premises passed	25 Mbps (Mean)	91.8%
-------------------------------	----------------	-------

## JENDELA Phase 1 Targets

7.5 million premises passed	35 Mbps (Mean)	96.9%
-----------------------------	----------------	-------

## Status as of Q3 2022

7.44 million premises passed	52.48 Mbps (Mean)	95.98%
------------------------------	-------------------	--------



THANK YOU